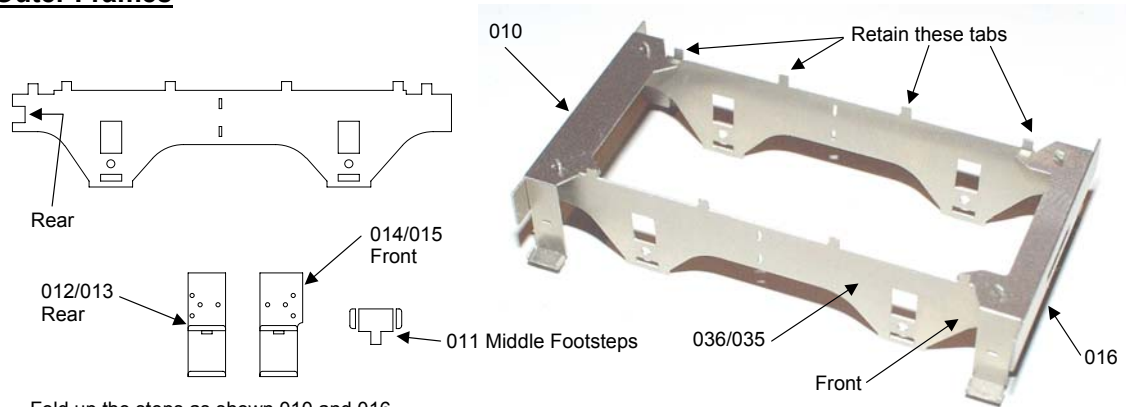


BJC3 4 Wheel Tender

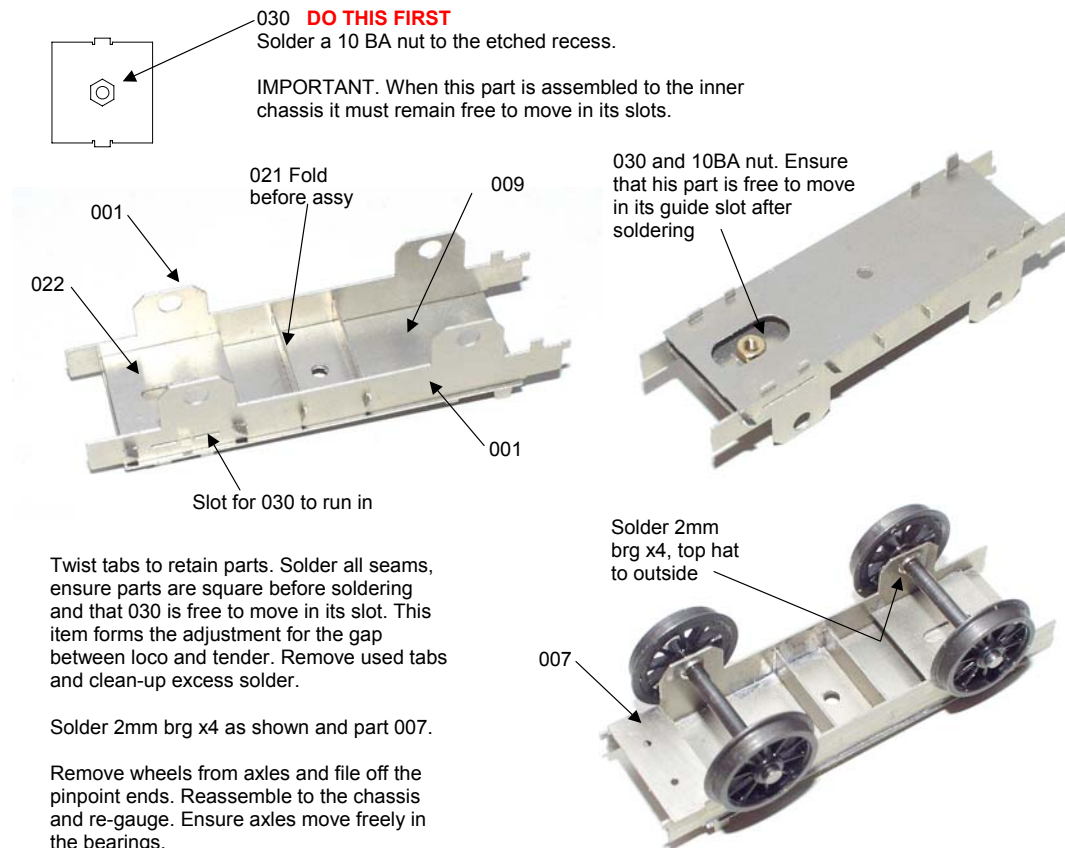
Mar 2008

Outer Frames



Fold up the steps as shown 010 and 016.
 010 is assembled to the rear. The rear is identified by the notched edge as indicated above.
 Ensure all folds are tight and square before soldering.
 Twist the tabs to retain and solder. Remove the excess tabs from the steps location, NOT from the frames.
 The middle footsteps and step overlays can be added at this stage or later.
 Fold up the middle footstep edges and use the middle footstep to retain the overlay to the main step. Twist the tab to retain and solder from the rear.

Inner Chassis



030 DO THIS FIRST
 Solder a 10 BA nut to the etched recess.
IMPORTANT. When this part is assembled to the inner chassis it must remain free to move in its slots.

Twist tabs to retain parts. Solder all seams, ensure parts are square before soldering and that 030 is free to move in its slot. This item forms the adjustment for the gap between loco and tender. Remove used tabs and clean-up excess solder.

Solder 2mm brg x4 as shown and part 007.

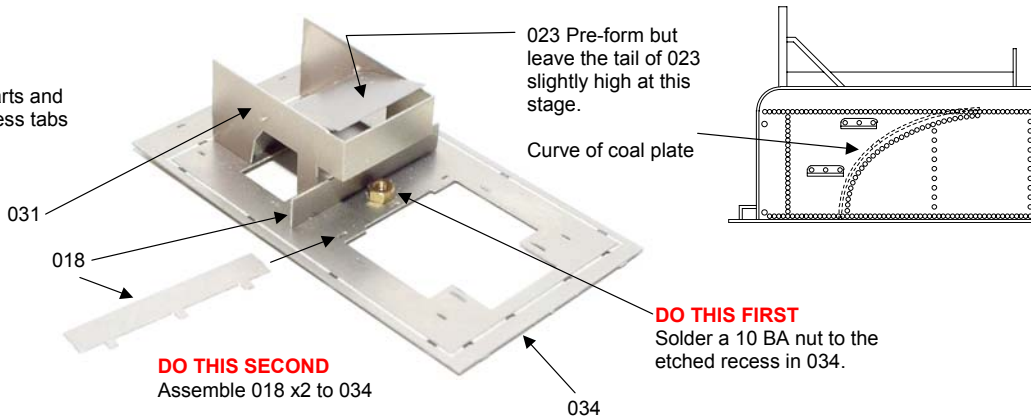
Remove wheels from axles and file off the pinpoint ends. Reassemble to the chassis and re-gauge. Ensure axles move freely in the bearings.

BJC3 4 Wheel Tender

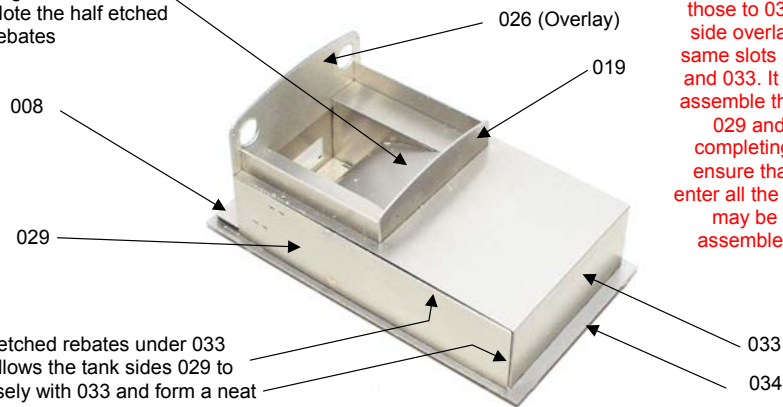
Mar 2008

Body

Solder all parts and remove excess tabs and solder.

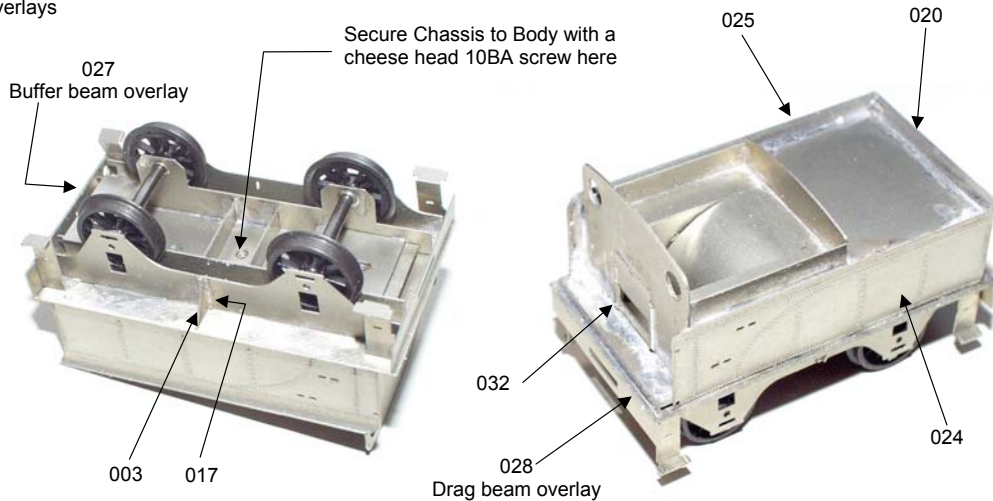


Ensure 023 back edge sits ON 033. Note the half etched rebates



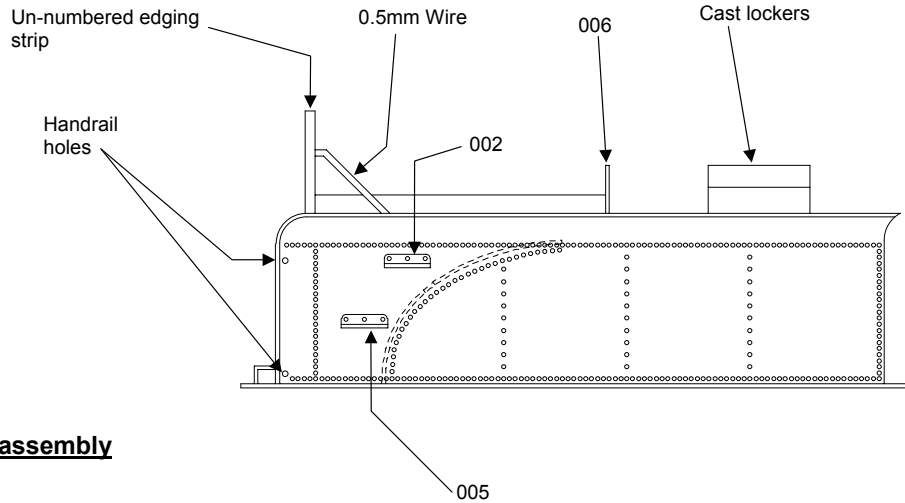
IMPORTANT
Solder all parts excepting those to 034. The Tender side overlays occupy the same slots as those of 029 and 033. It is better to test assemble the overlays with 029 and 033 before completing this stage to ensure that the overlays enter all the tab slots. These may be tight but will assemble successfully.

IMPORTANT.
Note the half etched rebates under 033 edges. This allows the tank sides 029 to assemble closely with 033 and form a neat sharp corner.
DO-NOT twist tabs at the bottom of 029 where it assembles to 034. These tab slots are to remain open to accept the tank side overlays

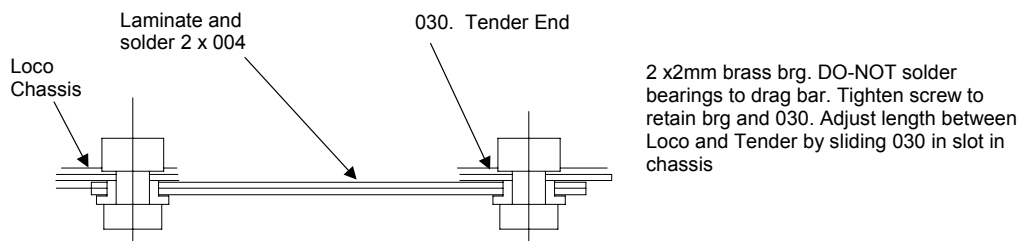


BJC3 4 Wheel Tender

Mar 2008



Drag Bar assembly



Add the remaining parts ie Axle box and springs, buffers etc

